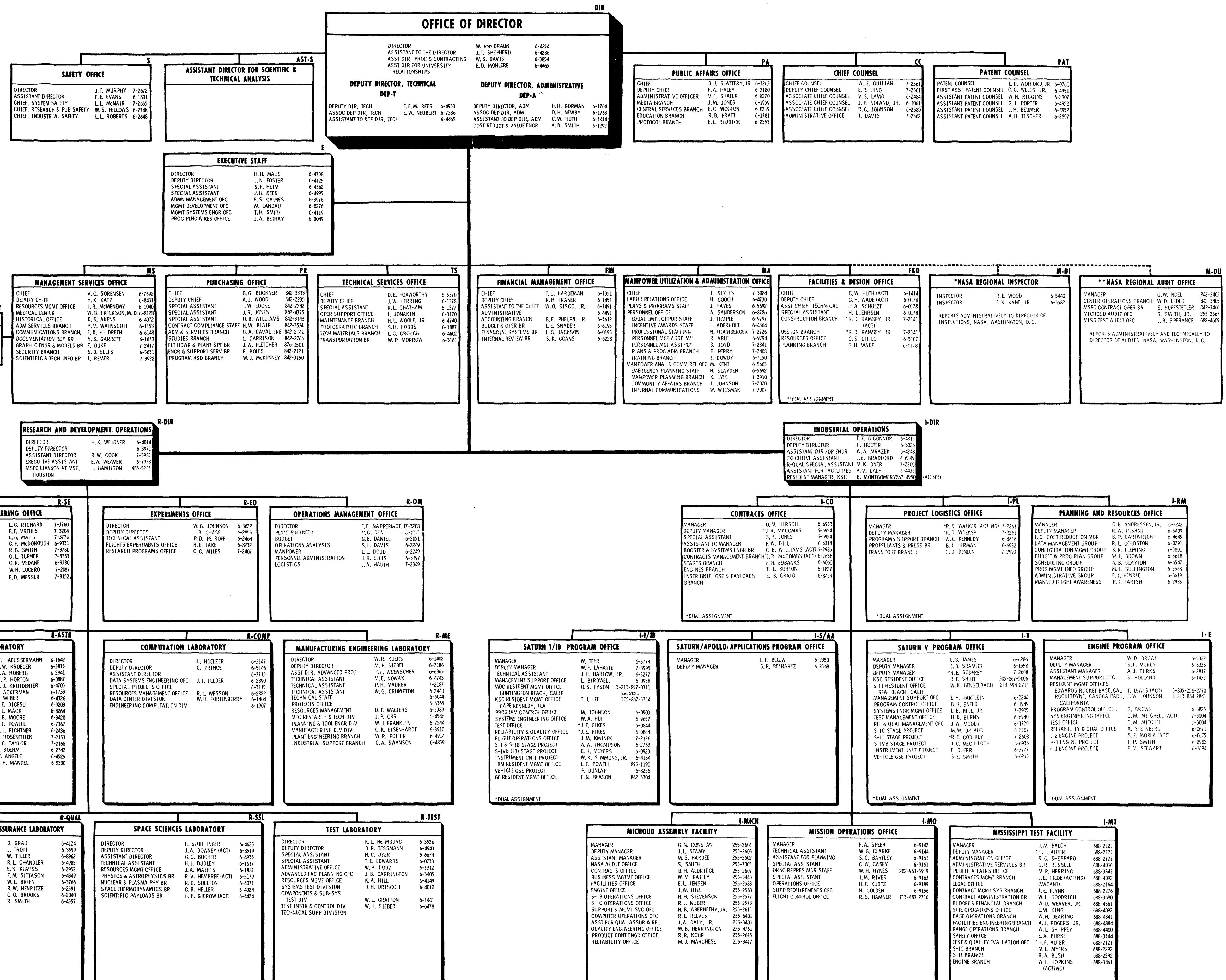


Oct 68

DIRECTORY CHART GEORGE C. MARSHALL SPACE FLIGHT CENTER

MARSHALL SPACE FLIGHT CENTER ALABAMA 35812
DATE: OCTOBER 1, 1968



ADDITIONAL COPIES MAY BE OBTAINED FROM: ADMINISTRATIVE BRANCH, I-1 BRANCH, I-11, TEL: 874-1153