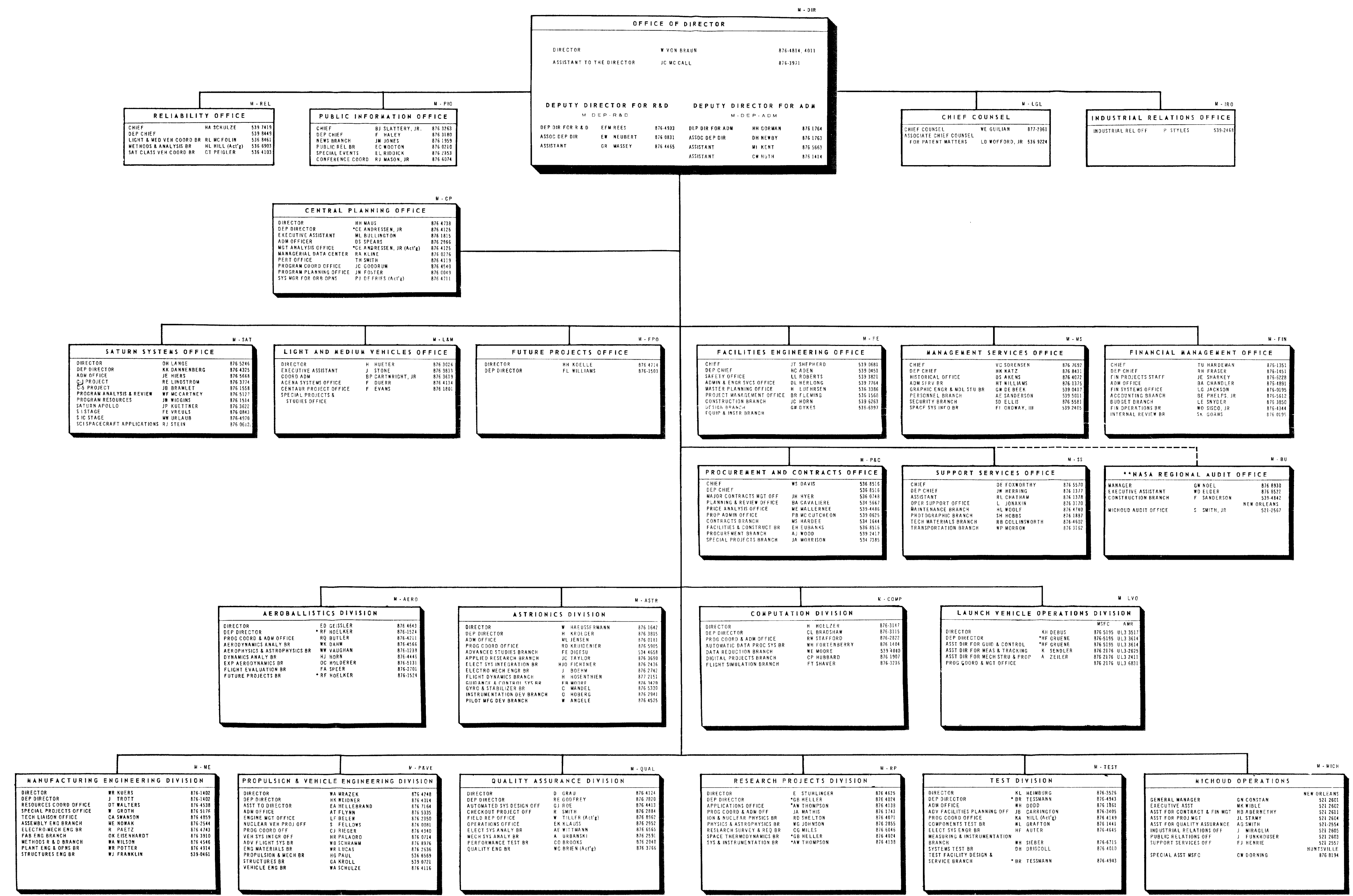


AUGUST 15, 1962

DIRECTORY CHART

GEORGE C MARSHALL SPACE FLIGHT CENTER

HUNTSVILLE, ALABAMA



*SERVING IN DUAL CAPACITY
**REPORTS ADMINISTRATIVELY & TECHNICALLY TO DIRECTOR OF AGENCIES, WASHINGTON, D.C.
Additional copies may be obtained from ADMINISTRATIVE SERVICES BRANCH TEL 876-1553 August 19, 1962